

CERTIFIED LAND CORNER RECORDATION

DESCRIPTION OF CORNER EVIDENCE FOUND, AND ORIGINAL RECORD (if known)

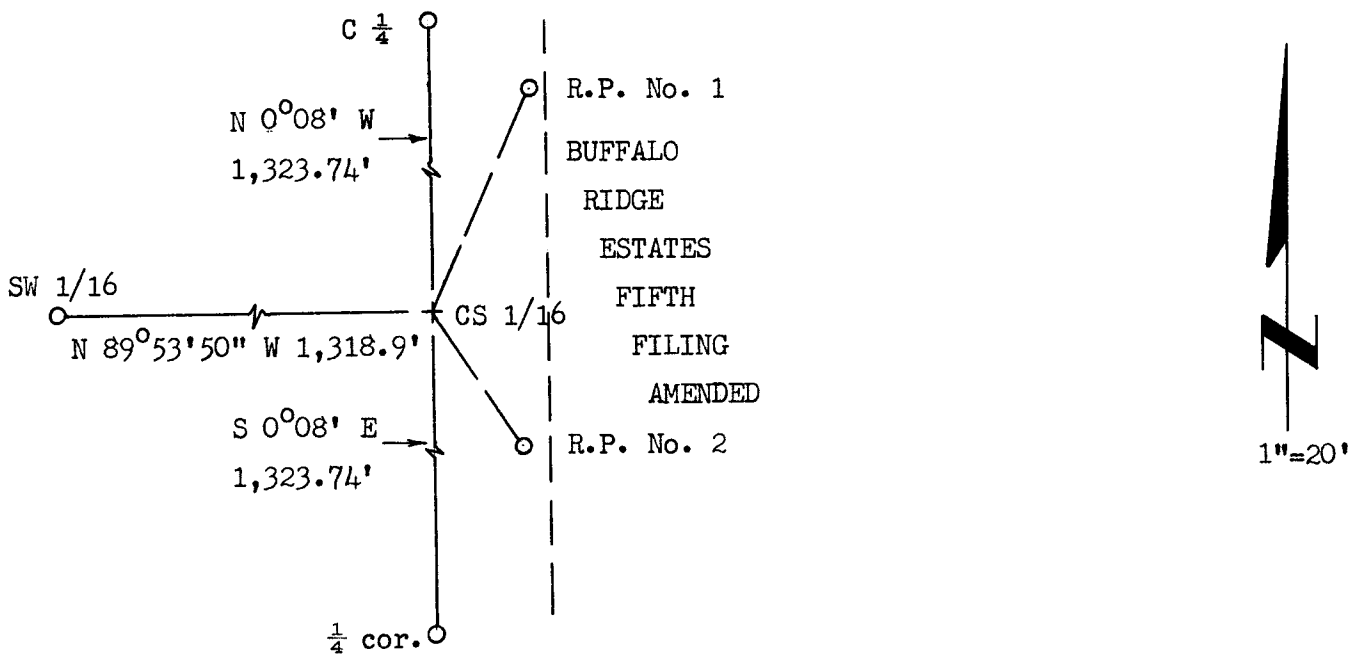
LOCATION

CS 1/16
S. 21
T. 14N., R. 66W.
6th P.M.

DESCRIPTION OF MONUMENT AND ACCESSORIES ESTABLISHED
TO PERPETUATE THE ORIGINAL LOCATION OF THIS CORNER:

No permanent monument set at corner. (Corner falls in easement.)
 R.P. No. 1 - A 5/8" dia. x 24" long rebar with SurvKAP bears
 N 23°49' E, 24.98 feet distant.
 R.P. No. 2 - A 5/8" dia. x 24" long rebar with SurvKAP bears
 S 34°06' E, 16.58 feet distant.

SKETCH, WITH COURSE AND DISTANCE TO ADJACENT CORNER IF DETERMINED IN THIS SURVEY.
(May Sketch or Paste Reproduction on Reverse Side.)



I, R.L. Hudson certify that I have carefully performed ~~or reviewed~~ the work done on the diagrammed corner as reported on this recordation form and approve the same.

R.L. Hudson
Signature of Surveyor

Wyoming L.S. No. 519
Registration No.

STATE OF WYOMING,
Office of Clerk and Recorder,
County of Laramie

This "corner record" was filed for record on the 23rd day of May, 1972, was noted on the cross-index plat and is assigned page No. 14-66, in book No. ONE.

John B. Hillman JW
County Official

Cross Index No. _____	T. _____	R. _____	Mer. _____
_____	T. _____	R. _____	Mer. _____
_____	T. _____	R. _____	Mer. _____
_____	T. _____	R. _____	Mer. _____
_____	T. _____	R. _____	Mer. _____
_____	T. _____	R. _____	Mer. _____
_____	T. _____	R. _____	Mer. _____

The State of Wyoming }
County of Laramie } SS

This instrument was filed for record
at 9:18 o'clock PM M. on the
23rd day of May
A. D. 1972 and duly recorded in
Book on page



County Clerk & Ex-Officio Register of Deeds
By _____, Deputy